

HERD MANAGEMENT REPORT

Herd Monitor

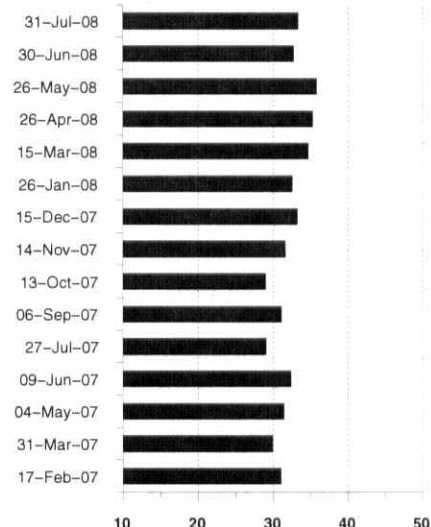


NAME _____ HERD NUMBER _____ PAGE 1 of 1 TEST DATE 31 Jul 2008
 SERVICE P10

STAGE OF LACTATION PROFILE

Stage (Days)	Cows	Test Day Production M kg	Lactation Average				Daily Fat Yield	Daily Protein Yield
			Milk kg	Current BCA				
				M	F	P		
1 - 44	6	26.7					1.07	.86
45 - 99	10	37.5	9136	205	211	195	1.29	1.06
100 - 199	11	32.1	10429	224	224	215	1.16	.96
200 - 305	14	28.1	10057	225	242	226	1.10	.94
Over 305	9	22.0	9197	208	209	200	.80	.72
Dry	7	-	8651	200	208	200	-	-
ALL							1.09	.92

STANDARD MILK



Standard kg Adjusted to second lactation; 150 Days in milk; 4.0% butterfat; 3.3% protein;

LACTATION GROUP PROFILE

Group	1st	2nd	3rd+	All	
Cows	20	15	22	57	
% of Herd	35	26	39	100	
Milk Value \$	5694	6116	6632	6159	
Lactation Avg kg	M	8528	9516	10322	9472
	F	339	360	397	366
	P	275	299	315	297
Current BCA	M	221	222	208	217
	F	231	227	217	225
	P	222	215	200	212

LACTATION RATING

Milk	99
Fat	98
Prot	99

PRODUCTION AVERAGES

	Cows	M	F	P	M	F	P	Milk Value \$
		305 Days kg			BCA			
Current	48	9472	366	297	217	225	212	6159
Rolling Herd	61	9094	347	281	206	212	200	-
		12 Months kg			Ratio	%	%	
Annual	62	9146	353	290	.82	3.9	3.2	5966

TEST DAY SUMMARY

▲	●	■	★	Test Date	Avg DIM	Test Day Production			Cows		Standard Milk	Somatic Cell Count	Prot/Fat Ratio	Milk Value 305 \$	Current BCA		
						M kg	F %	P %	Milk	Dry					M	F	P
V	2	2	2	31 Jul 08	185	29.5	3.7	3.1	50	7	33.3	264	.84	6159	217	225	212
V	2	2	2	30 Jun 08	179	30.2	3.8	3.1	49	9	32.7	417	.81	6224	220	229	216
V	2	2	2	26 May 08	185	33.3	3.8	3.2	50	12	35.8	204	.83	6500	224	234	222
V	2	2	2	26 Apr 08	197	31.2	3.9	3.2	52	10	35.3	196	.80	6407	218	226	214
V	2	2	2	15 Mar 08	210	31.9	3.8	3.2	52	10	34.7	171	.84	6289	211	222	209
V	2	2	2	26 Jan 08	205	28.2	4.2	3.2	54	9	32.6	153	.78	5898	207	219	202
V	2	2	2	15 Dec 07	189	29.0	4.3	3.3	56	6	33.2	233	.78	5873	204	217	199
V	2	2	2	14 Nov 07	194	27.0	4.1	3.2	58	6	31.6	158	.80	5677	202	209	195
V	2	2	2	13 Oct 07	177	26.1	3.8	3.2	58	6	29.0	185	.82	5539	200	203	191
V	2	2	2	06 Sep 07	171	28.5	3.5	3.1	58	5	31.1	201	.89	5685	205	207	199
V	2	2	2	27 Jul 07	166	28.0	3.6	3.0	57	6	29.1	281	.84	5697	200	204	192
V	2	2	2	09 Jun 07	154	30.6	3.8	3.0	55	5	32.4	183	.79	5873	201	210	196

▲ V = Verified by DHI Staff; N = Non - Verified

● Milking Frequency of Herd

■ Milking(s) Weighed

★ Milking(s) Sampled